



# Tightness to the rain chamber

*CELL series*



# The innovation as an attitude

## *The company*

**Ineltec** is a company with more than 30 years of experience in the sector and 10.000 equipment installed all around the world. Our achievements are due to the ability of offering tailored solutions to perform any kind of test.

*“Technology, research and innovation are the basis for creating equipment of high reliability.”*



# Model

Tightness to the rain chamber CELL series



Tightness to the rain chamber made by Ineltec to carry out tests according to the international standards.

# Model

Tightness to the rain chamber

CELL Series / INELTEC

## *Equipment description*

**Tightness to the rain chamber from CELL series** to carry out tests for checking the protection degree against the rain that has a sample, normally tight objects that will remain outdoors.

Tightness to the rain chamber are used mainly in the electronics, construction, military, luminary, automotive sectors, between others.

## Volumes

01 500 liters

02 1000 liters

03 2000 liters

01



02



# Sectors

Tightness to the rain chamber

CELL Series / INELTEC



Aeronautical,  
Automotive,  
Railway



Luminary,  
Watertight parts



R+D,  
Technological  
centers,  
Universities,  
Laboratories



Electronic  
Telecommu-  
nications,  
Mechanical  
constructions,



Defense,  
Armament

# Standards

**IEC 60529**

**UNE 20324**

**Protección IPX1** *\*Optional*

**DIN 40050-9**

**Protección IPX3**

**Protección IPX2** *\*Optional*

**CEI 60529**

**Protección IPX4**

**Etc.**

# Equipments characteristics

## construction



01

### 01/ interior/exterior

The internal part is made of stainless steel sheet and the external one of aluminum lacquered in white.



02

### 02/ windows

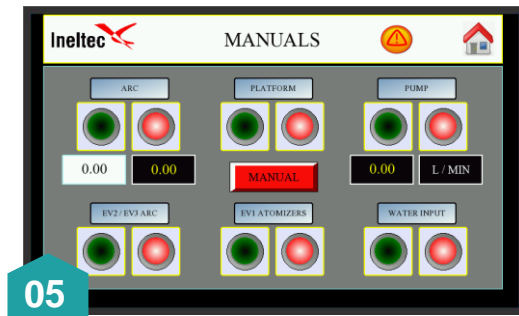
On the door, it is placed an observation windows to see the arch and rotary test platform.



04

### 04/ Mobility

The machine has 4 multidirectional wheels with brake devices.



05

### 05/ Control system

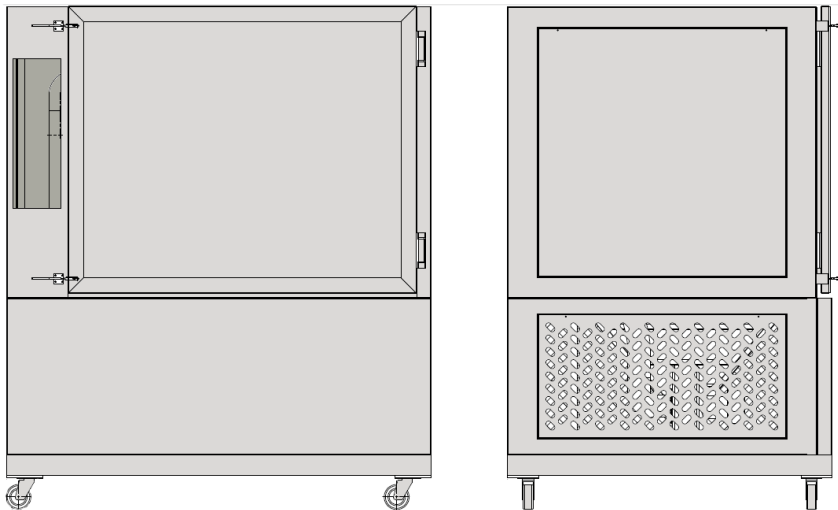
The equipment is controlled by a touch screen PC placed out of the chamber.

# Features of the equipment

Tightness to the rain chamber

CELL Series / INELTEC

## Front / Side Drawing



## Consumption and measurements

CELL Model	Connection voltage and power		Maximum consumed power	Noise level	Dimensions HxWxD (mm) *approx.		Weight Approx
	230 V TT	50 Hz			Kw	dB	
1000	*	*	1,5	<55	1000x1000x1000	1900x1400x1500	450

\*Optionally, it can be controlled the temperature of the chamber or water.

# Control system

Tightness to the rain chamber

CELL Series / INELTEC

*Programmer/  
Touch screen*

## Characteristics programmer

- 1/ Angle of rotation of the rain bow
- 2/ Arc speed
- 3/ Arc oscillation time
- 4/ Height and speed of rotation of the plate
- 5/ Adjust water flow rate and maximum pressure
- 6/ Rain time and pause
- 7/ N° of cycles
- 8/ Programmable digital counter rain cycles
- 9/ Generator cycle testing programs

## Touch screen programmer





# International Presence



# Range of products

Tightness to the rain chamber  
CELL Series / INELTEC

## ES Simulation equipment



Climatic chambers



Modular chambers



Thermal shock



Combined tests



Specials



Stability



Generator groups



Calorimetric



Corrosion - combined



Corrosion



Frost / Defrost



Tightness – rain



Tightness – air/wind



Freezer cabinet



Thermostatic bath



Furnace



Heating

# Range of products

Tightness to the rain chamber  
CELL Series / INELTEC

## BE Testing bench



Fatigue endurance



Characterization



Pulsing pressure



Rupture



Bursting



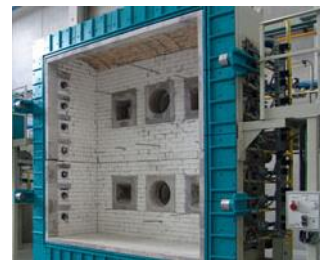
Liquid Thermal Shock



Standardization



Resistance to the fire - I



Resistance to the fire - II



Reaction to the fire - I



Reaction to the fire - II

## MC Measurement and control



Artificial vision - I



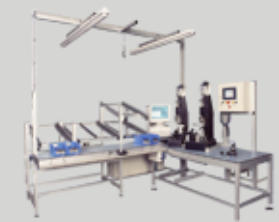
Artificial vision - II



Artificial vision - III



End of line control - I



End of line control - II



**Ineltec**  
Spain / Barcelona  
Headquarters



C/ Metal·lúrgia, 8  
Pol. Ind. Les Goules  
08551 Tona



T/ 0034 938 605 100  
F/ 0034 938 717 463



[ineltec@ineltec.es](mailto:ineltec@ineltec.es)  
[www.ineltec.es](http://www.ineltec.es)

**Follow us**  
on our  
social networks



[twitter](#)



[Blog](#)